

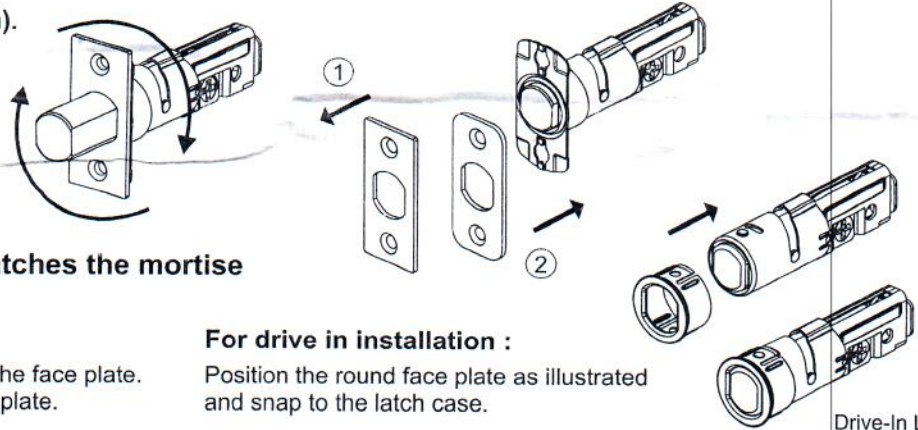
# INSTRUCTIONS FOR INSTALLATION OF SINGLE OR DOUBLE CYLINDER DEADBOLTS AND THE REPLACEMENT OF EXISTING LOCKS

**FOR USE ON DOOR THICK 1-3/8" TO 1-3/4" (35mm-45mm) TOOLS REQUIRED FOR NEW CONSTRUCTION :**

1 philips head screwdriver 1 2-1/8" (54mm) hole saw 1 1" (25mm) drill & 1 chisel

**TOOLS REQUIRED FOR REPLACEMENT :** 1 philips head screwdriver

Rotate to adjust if 2-3/4" (70mm).



**Attach the latch face that matches the mortise in the edge of your door.**

**To change latch faces :**

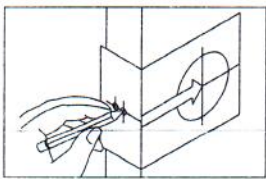
1. Use a flat screwdriver to separate the face plate.
2. Snap selected latch face onto backplate.

**For drive in installation :**

Position the round face plate as illustrated and snap to the latch case.

Drive-In Latch

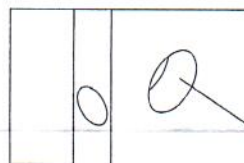
## 1. MARK DOOR



- a. Fold and apply template on high edge of door bevel and mark center of door edge as indicated on template at the desired height from the floor.
- b. Mark center hole on door face through guide on template for either 2-3/8" or 2-3/4" (60mm or 70mm) backset.

**NOTE : BACKSET ON DOOR FACE MUST BE SAME AS BACKSET OF YOUR LOCK.**

## 2. DRILL HOLES

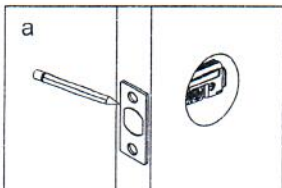


Drill holes as marked.

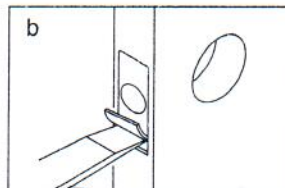
2-1/8" (54mm) hole for lockset

**NOTE : DRILL 2-1/8" (54mm) HOLE FROM BOTH SIDES OF DOOR TO AVOID SPLITTING WOOD.**

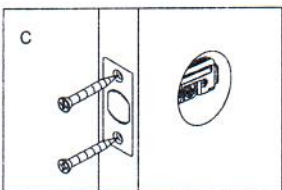
## 3. INSTALL LATCH



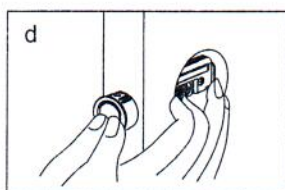
- a. Insert latch in hole, mark outline of faceplate and remove latch.



- b. Chisel 5/32" (4mm) deep or until faceplate flush with door edge.

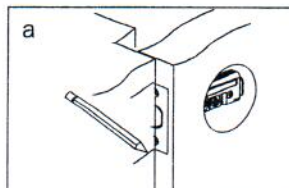


- c. Insert latch and tighten screws.

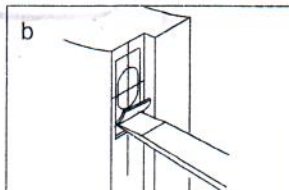


- d. For drive in application, drive the latch into the hole on edge of door and go to step 4.

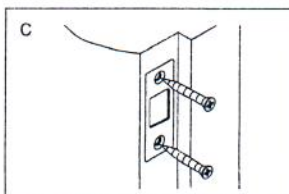
## 4. INSTALL STRIKE BOX & STRIKE



- a. Close door to mark horizontal center line of strike.



- b. Measure one half of door thickness from door stop and vertically mark center line of strike. Drill aperture which is same with strike box 1-9/64" (29mm) deep at inter section of horizontal and vertical center line of strike. Match screw hole on strike with center lines on jamb. Mark outline and chisel 1/8" (3mm) deep for strike.



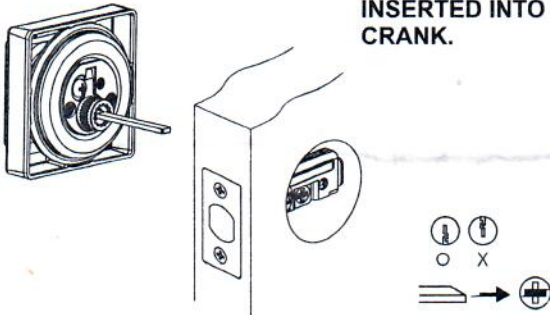
- c. Install strike and tighten screws.

### 5. INSTALL SINGLE CYLINDER

#### INSTALL EXTERIOR MECHANISM-SINGLE CYLINDER

Tapped holes in housing of exterior cylinder should be lined up with screw holes. (Key hole should be in down position.)

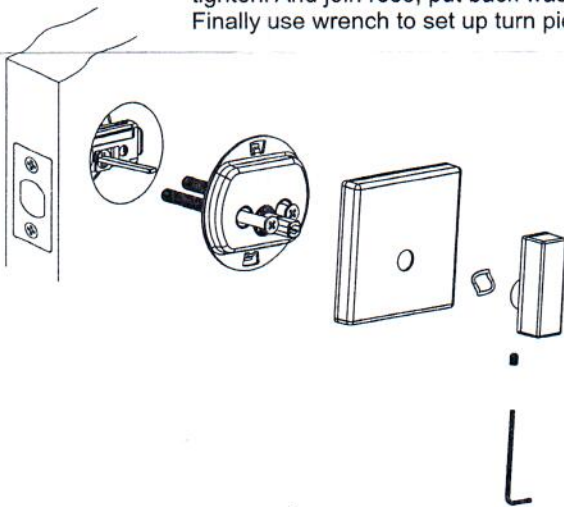
**TORQUE BLADE SHOULD BE HORIZONTALLY INSERTED INTO LATCH CRANK.**



#### INSTALL INTERIOR MECHANISM-SINGLE CYLINDER

##### Int. concealed installation screws

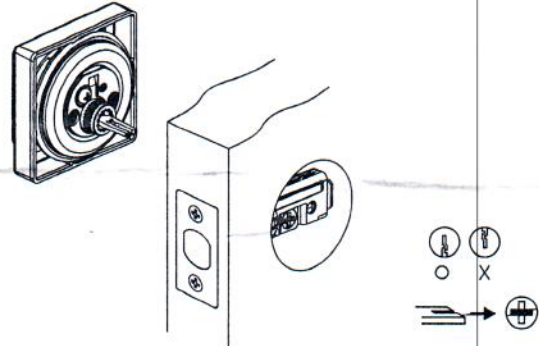
To get rose plate aim at torque blade, put into the door. Then use the screw to tighten. And join rose, put back washer. Finally use wrench to set up turn piece.



### 6. INSTALL DOUBLE CYLINDER

#### INSTALL EXTERIOR CYLINDER-DOUBLE CYLINDER

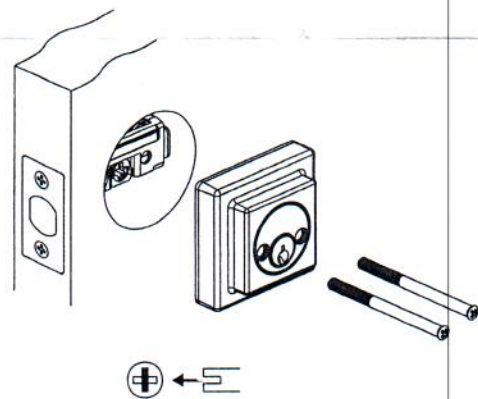
Press exterior cylinder flush against door. Exterior torque blade should be horizontally inserted into latch crank first.



#### INSTALL INTERIOR CYLINDER-DOUBLE CYLINDER

Press interior assembly flush against door, making certain the torque blade is properly positioned in latch crank.

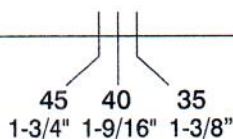
Key hole should be in down position. The interior torque blade is inserted into the exterior blade.



Insert two screws through countersunk holes engaging holes in exterior cylinder and tighten firmly.

### TEMPLATE

Fold on dotted line and fit on door edge



Mark 1" (25.4mm) hole at center of door edge.

FOR BACKSET  
2-3/8" (60mm)

FOR BACKSET  
2-3/4" (70mm)

