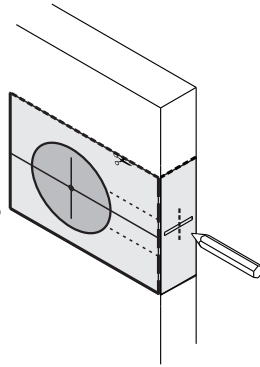


# Deadbolt with Square Furniture

SUITS 32mm TO 48mm THICK DOORS

## Step 1. Door Preparation

- Fold the supplied template and position template on door edge.
- Mark centre of 54mm hole on both sides of door.
- Mark horizontal centre-line of 25mm hole using template, then mark centre of door thickness.
- Drill 54mm hole through door face, from both sides to avoid splintering.
- Drill 25mm hole into the edge of the door, central to the door thickness. Ensure the hole is drilled squarely.

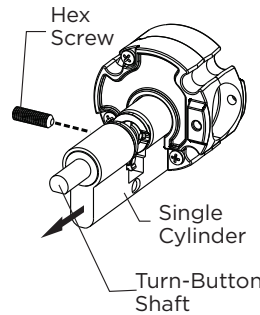


## Step 3. Single Cylinder Only

This step only applies to single cylinder product. Skip to STEP 4 if installing double cylinder product.

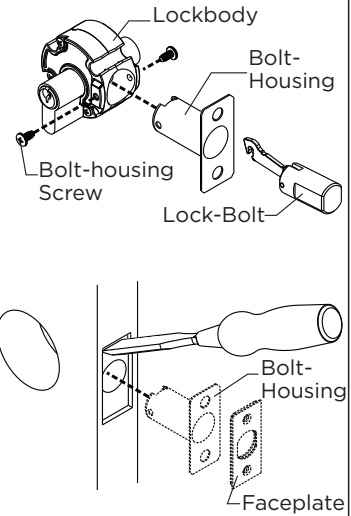
For single cylinder product, the turn-button shaft must be on the interior side of the door. If required, re-orientate cylinder as below:

- Remove the hex screw at the rear of the lockbody with allen key provided.
- Flip the cylinder so the shaft is on the interior side of the door and slide cylinder back into lockbody.
- Re-install the hex screw into the lockbody and tighten.



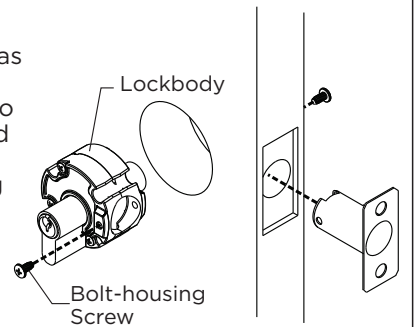
## Step 2. Chisel Faceplate Recess

- Remove both bolt-housing screws from lockbody.
- Remove bolt housing and lock-bolt from lockbody.
- Position bolt-housing and faceplate centrally within 25mm hole in door edge and mark around the rectangular portion of faceplate.
- Chisel marked rectangle to a depth of 3.5mm or until bolt-housing with faceplate is flush with door edge.
- Remove bolt-housing and faceplate from door before moving to next step.



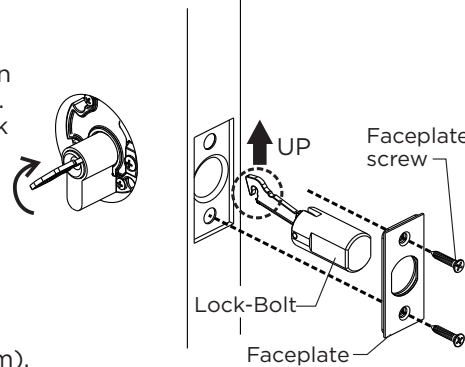
## Step 4. Lockbody Installation

- Install lockbody into door, with orientation as shown.
- Install bolt-housing into 25mm hole in door and locate in lockbody.
- Install 2 x bolt-housing screws, one from each side.



## Step 5. Lock-Bolt Installation

- Rotate key towards edge of door.
- Orientate lock-bolt as shown and insert into bolt-housing.
- Push lock-bolt in until a click is heard and the lock-bolt won't go in any further.
- Rotate key away from door edge, if lock-bolt does not retract then repeat above.
- Position faceplate and pilot drill holes for faceplate screws, then install two faceplate screws (#6 x 19mm).



## Step 6. Screw Selection

- Measure door thickness and select correct mounting screws as per table below:

DOOR THICKNESS	MOUNTING SCREW
32 - 39mm	M4 x 40mm LONG
39 - 48mm	M4 x 50mm LONG

## DOOR TEMPLATE

Fold on dotted line & position on door edge

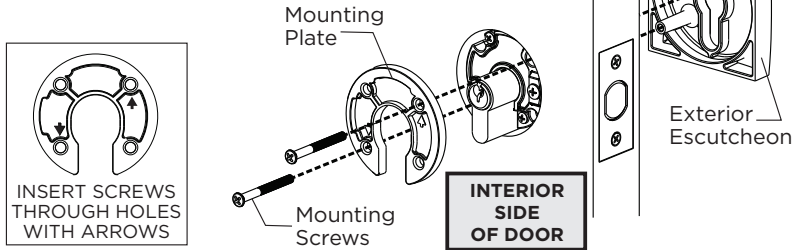
Mark Ø25mm hole at centre of door edge.

60mm BACKSET

Ø 54mm

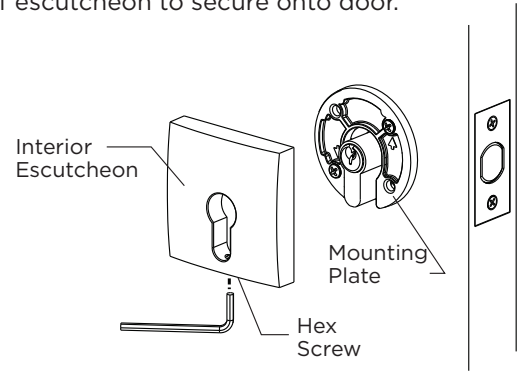
## Step 7. Escutcheon Installation

- Position exterior escutcheon on exterior side of door.
- Position mounting plate on interior side of door.
- Hold exterior escutcheon squarely on door then insert correct mounting screws selected in STEP 6 through the holes with arrows in mount plate and tighten.
- Ensure screws are not overtightened.
- Check lock function, if lock-bolt is not retracting and extending then repeat from STEP 5.



## Step 8. Interior Escutcheon Installation

- Position interior escutcheon over mounting plate.
- While holding interior escutcheon squarely on door face, tighten hex screw on underside of escutcheon to secure onto door.

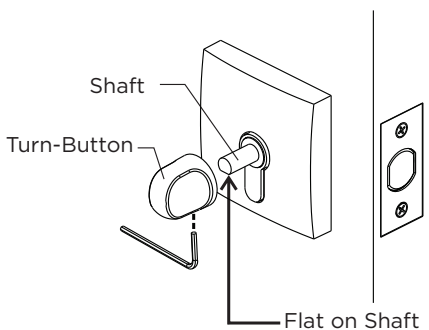


## Step 9. Single Cylinder only

**This step only applies to single cylinder product. Skip to STEP 10 if installing double cylinder product.**

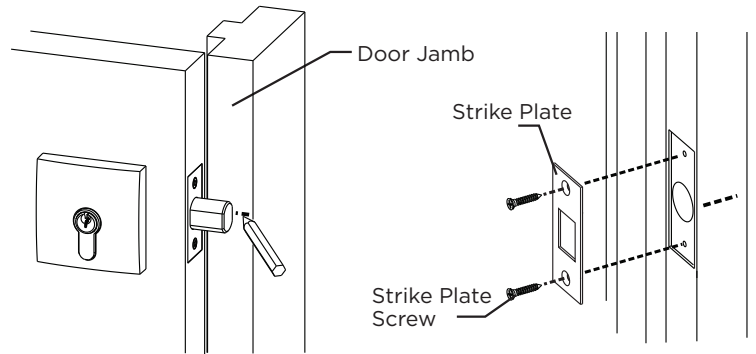
For single cylinder product:

- Install turn-button onto shaft on interior side of door. Orientate hex hole with flat on shaft.
- Tighten hex screw with allen key provided.



## Step 10. Strike Plate Installation

- Extend the lock-bolt.
- Gently close the door until the lock-bolt rests on the door jamb.
- Mark centre of lock-bolt on door jamb, this mark can be used to position strike plate.
- Mark and drill 25mm hole inside the jamb to a depth of 25mm on marked bolt centre position.
- Position the strike plate and mark around. Chisel recess until strike plate sits flush with door jamb face.
- Fasten strike plate to door jamb with two strike plate screws (#8 x 25mm)



**DEL F ARCHITECTURAL**  
**T** 1300 362 625 **F** 1300 362 643  
**E** sales@delfarchitectural.com.au  
**W** www.delfarchitectural.com.au

