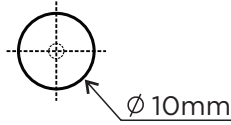
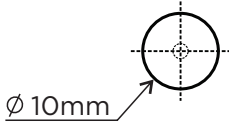
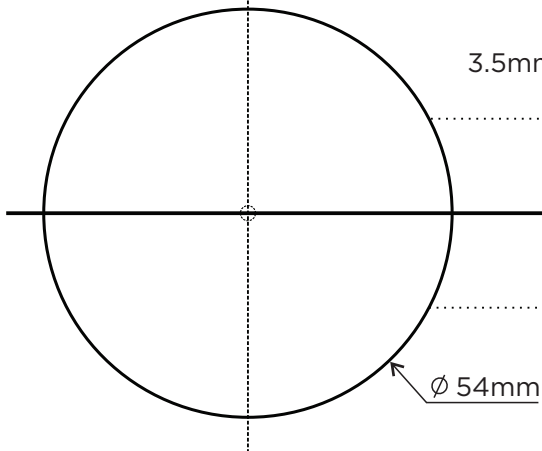
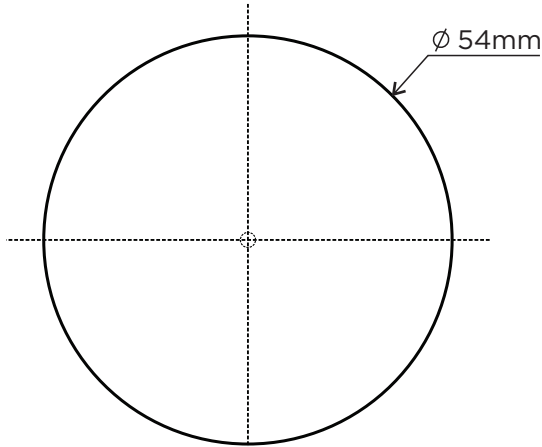


Linear Secure & Linear Secure Classic
DOOR TEMPLATE

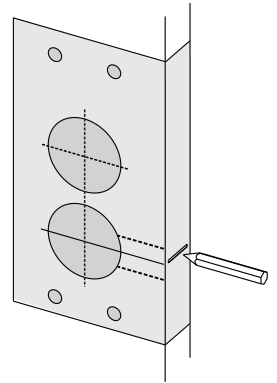


Mark and drill holes from both sides of the door.

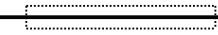


Chisel
3.5mm deep

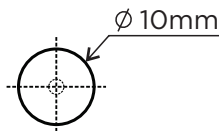
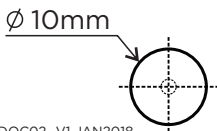
Fold on dotted line and position on door edge



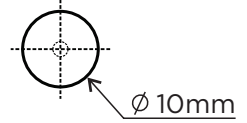
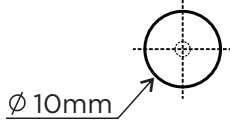
Mark $\varnothing 25\text{mm}$ hole at centre of door edge.



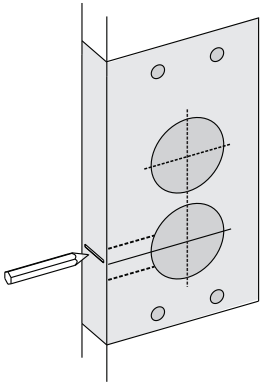
LATCH HEIGHT



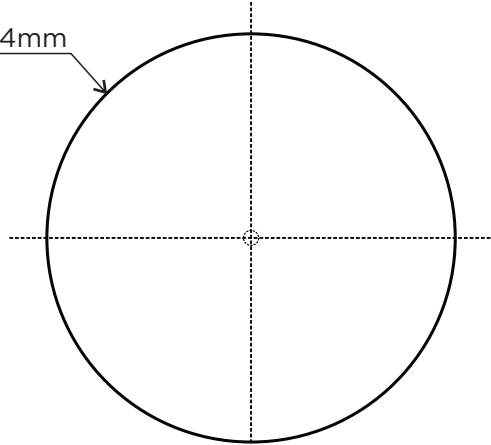
Linear Secure & Linear Secure Classic
DOOR TEMPLATE



Fold on dotted line and position on door edge



$\varnothing 54\text{mm}$



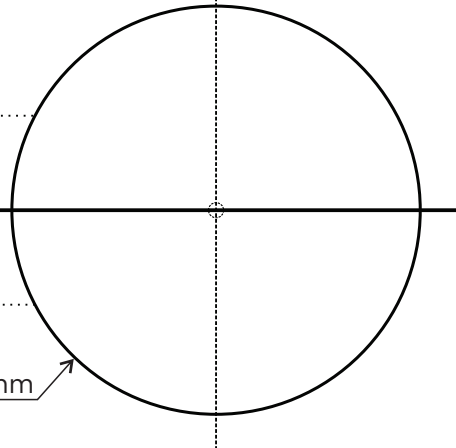
60mm BACKSET

Chisel
3.5mm deep

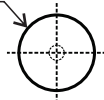
Mark $\varnothing 25\text{mm}$ hole at centre of door edge.

LATCH HEIGHT

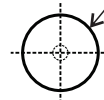
$\varnothing 54\text{mm}$



$\varnothing 10\text{mm}$



$\varnothing 10\text{mm}$



Mark and drill holes from both sides of the door.